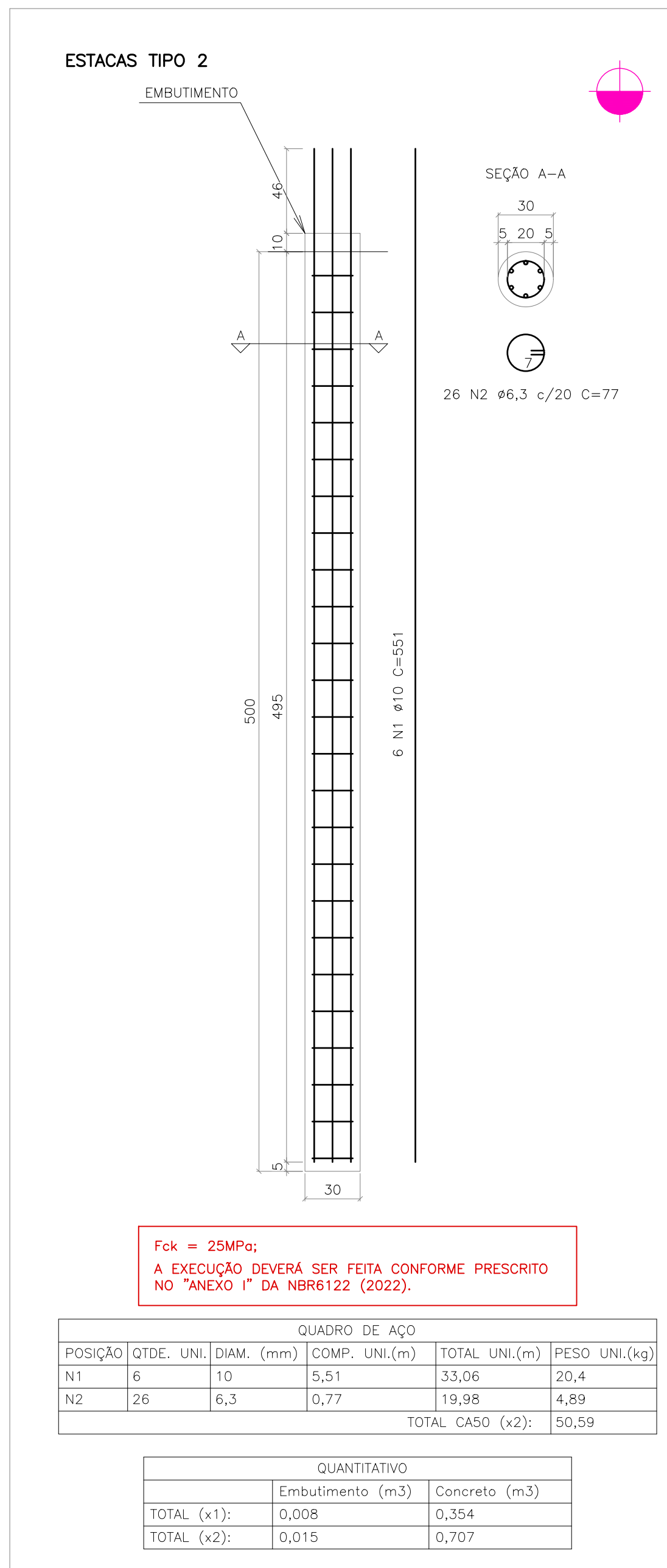
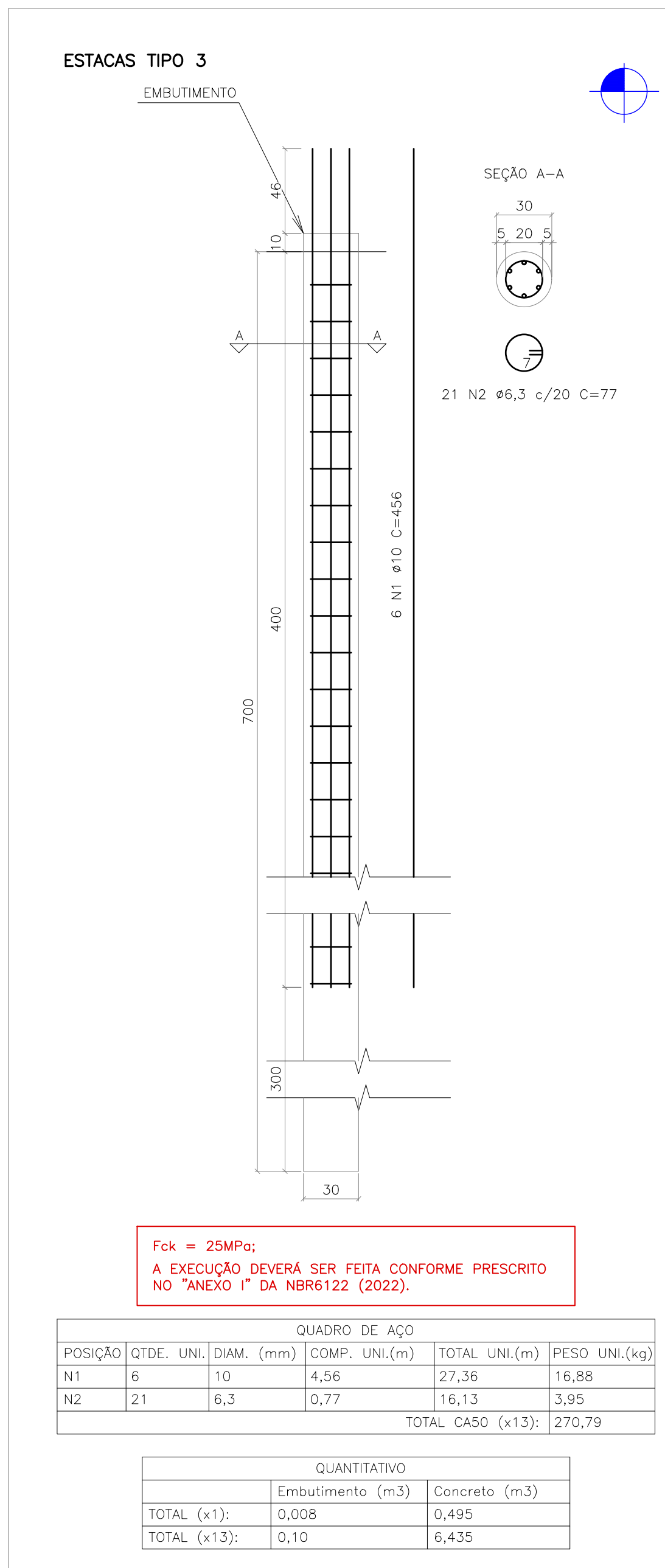


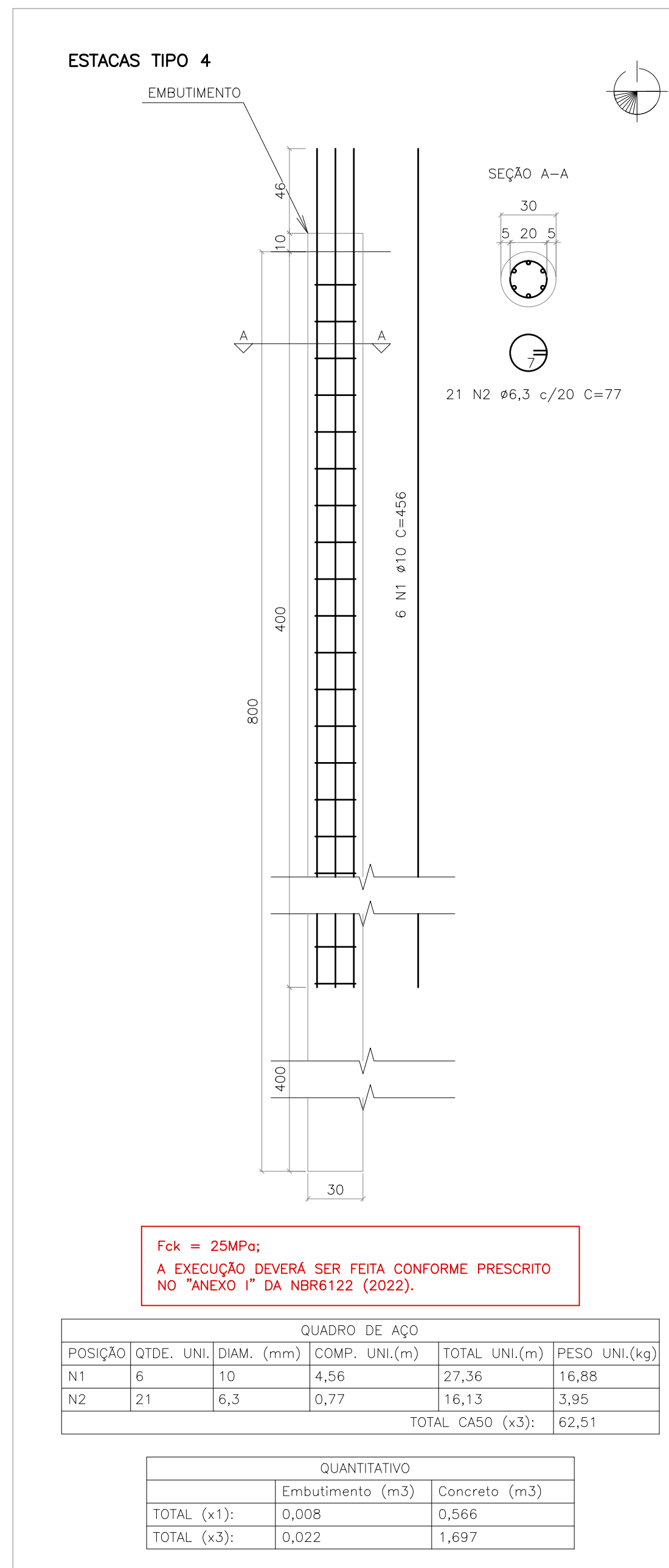
DETALHAMENTO DE ESTACA ESCAVADA (x14)
ESCALA: 1/25



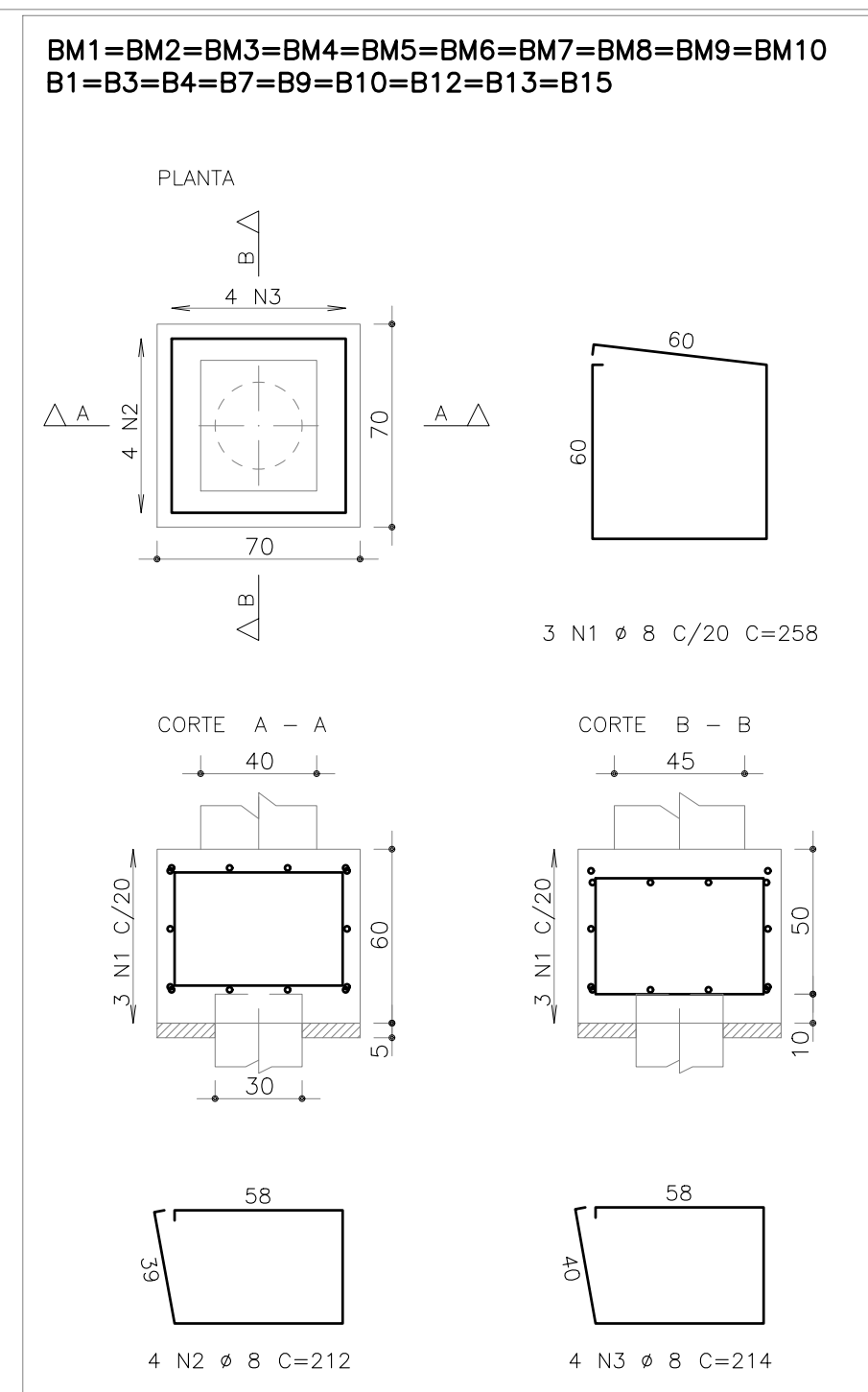
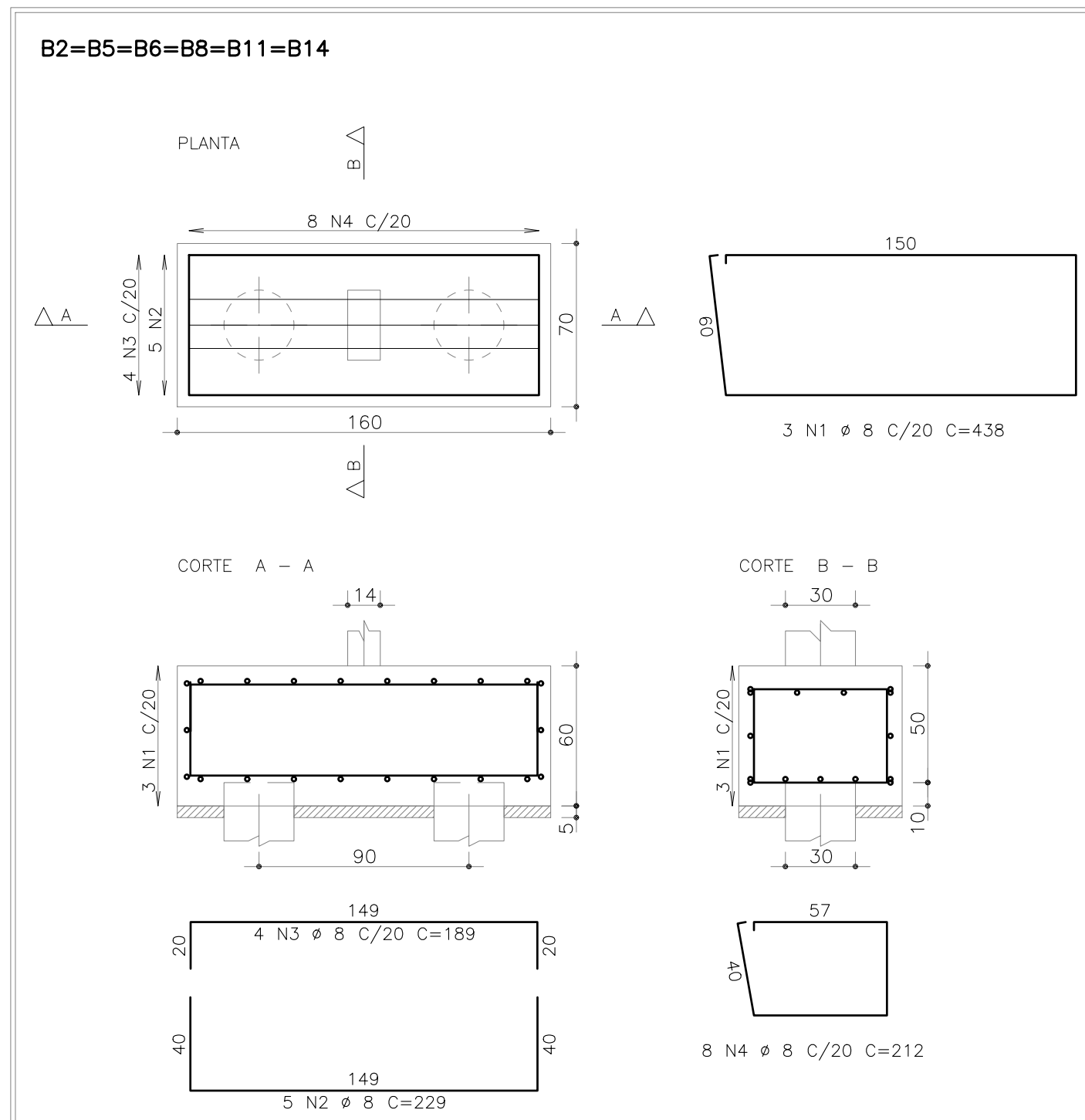
DETALHAMENTO DE ESTACA ESCAVADA (x2)
 ESCALA: 1/25



DETALHAMENTO DE ESTACA ESCAVADA (x13)
 ESCALA: 1/25







DETALHAMENTO DE ESTACA ESCAVADA (x3)
 ESCALA: 1/25



AÇO	POS	BIT	QUANT	COMPRIMENTO	
				UNIT cm	TOTAL cm
B1=B3=B4=B7=B9=B10=B12=B13=B15					
	50A	1	8	27	558
	50A	2	8	36	212
	50A	3	8	36	214
B2=B5=B6=B8=B11=B14 (X6)					
	50A	1	8	18	438
	50A	2	8	30	229
	50A	3	8	24	189
	50A	4	8	48	212
BM1=BM2=BM3=BM4=BM5=BM6=BM7=BM8=BM9=BM10 (X10)					
	50A	1	8	30	258
	50A	2	8	40	212
	50A	3	8	40	214

RESUMO DE AÇO			
AÇO	BIT	COMPR	PESO
	mm	m	kgf
50A	8	765	302
Peso Total	50A =		302 kgf

DETALHAMENTO DOS BLOCOS
ESCALA 1:25

LEGENDA DE ESTACAS	
	ESTACA ESCAVADA 30cm PROFUNDIDADE = 5m CAPACIDADE DE CARGA = 5,56t COTA DE ARRASAMENTO = -2,10m
	ESTACA BROCA 30cm PROFUNDIDADE = 5m CAPACIDADE DE CARGA = 5,56t COTA DE ARRASAMENTO = -2,10m
	ESTACA ESCAVADA 30cm PROFUNDIDADE = 7m CAPACIDADE DE CARGA = 7,00t COTA DE ARRASAMENTO = -2,10m
	ESTACA ESCAVADA 30cm PROFUNDIDADE = 8m CAPACIDADE DE CARGA = 8,60t COTA DE ARRASAMENTO = -2,10m

[illegible]