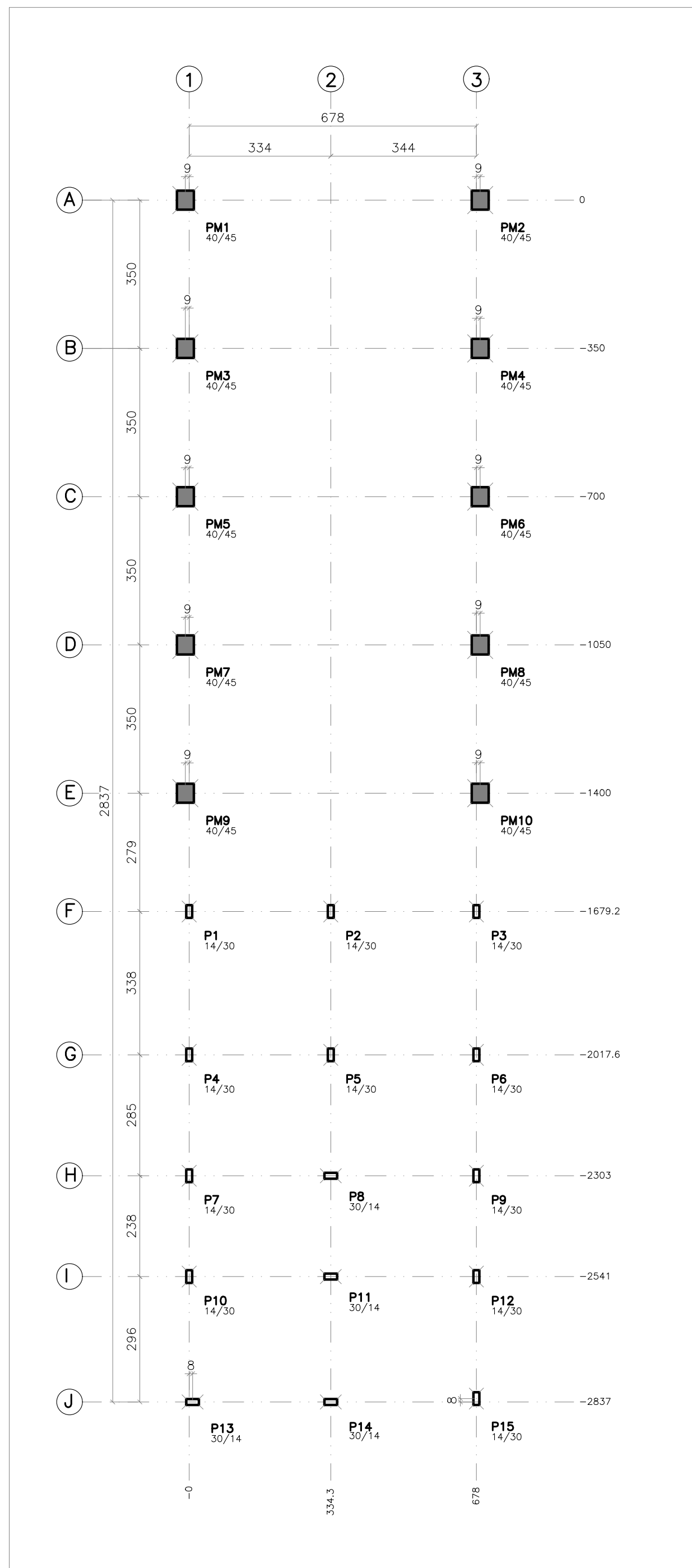


IMPLANTAÇÃO – REFEITÓRIO

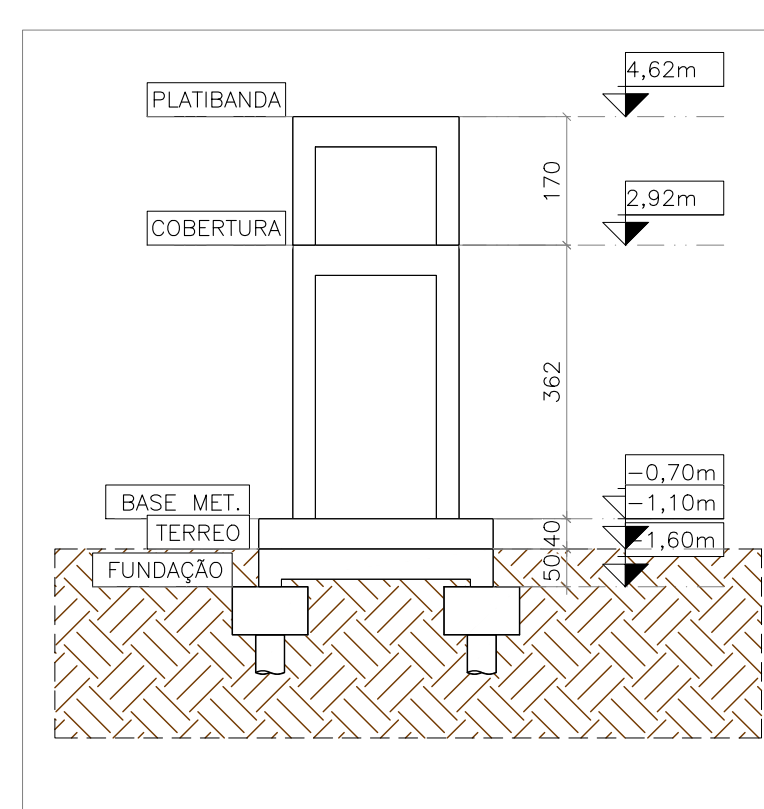
ESCALA 1:100



PLANTA DE LOCAÇÃO DE PILARES

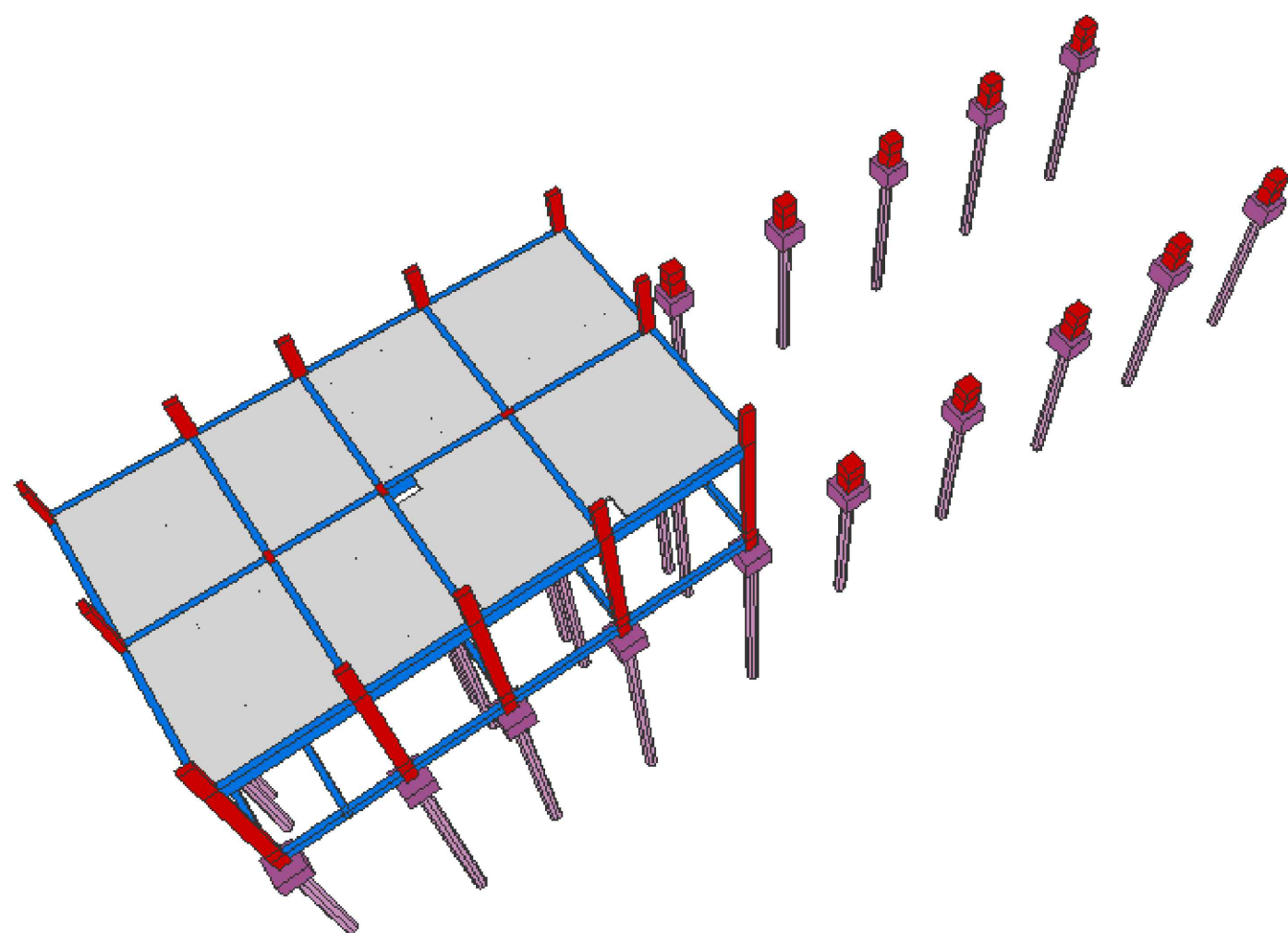
ESCALA 1:100

Pilar	X cm	Y cm
P1	0.0	-1679.2
P2	334.3	-1679.2
P3	678.0	-1679.2
P4	0.0	-2017.6
P5	334.3	-2017.6
P6	678.0	-2017.6
P7	0.0	-2303.0
P8	334.3	-2303.0
P9	678.0	-2303.0
P10	0.0	-2541.0
P11	334.3	-2541.0
P12	678.0	-2541.0
P13	8.0	-2837.0
P14	334.3	-2837.0
P15	678.0	-2829.0
PM1	-9.0	0.0
PM2	687.0	0.0
PM3	-9.0	-350.0
PM4	687.0	-350.0
PM5	-9.0	-700.0
PM6	687.0	-700.0
PM7	-9.0	-1050.0
PM8	687.0	-1050.0
PM9	-9.0	-1400.0
PM10	687.0	-1400.0



ESQUEMA DE NÍVEIS

ESCALA 1:100



VISTA 3D – REFEITÓRIO

SEM ESCALA

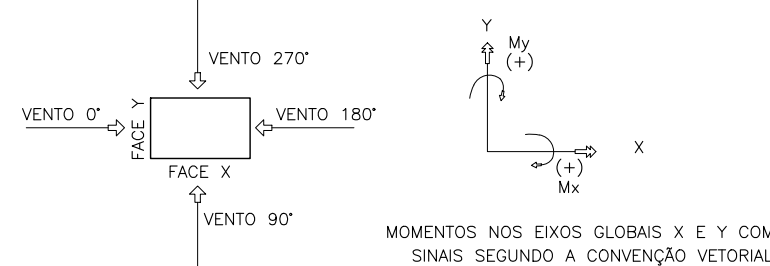
	PILAR QUE NASCE
	PILAR QUE PASSA
	PILAR QUE MORRE
	PILAR QUE MUDA DE SEÇÃO

Todas permanentes e acidentais dos pavimentos										Elem		Peso Próprio		Elem										Cargos permanentes										Elem										Cargos acidentais										Elem										FZ MAX-ELU2-Verificações de estado limite último – Pilares e fundações																																																																																																																																																																																																																																																																																																																																																																																																																																																																																																																																																																																																																																																																																																																																											
Fz tf		Fx tf		Fy tf		Mx tfm		My tfm		Fz tf		Fx tf		Fy tf		Mx tfm		My tfm		Fz tf		Fx tf		Fy tf		Mx tfm		My tfm		Fz tf		Fx tf		Fy tf		Mx tfm		My tfm		Fz tf		Fx tf		Fy tf		Mx tfm		My tfm		Fz tf		Fx tf		Fy tf		Mx tfm		My tfm																																																																																																																																																																																																																																																																																																																																																																																																																																																																																																																																																																																																																																																																																																																																																	
EB1	3.61	0.17	0.54	0.71	0.17	EB1	0.48	-0.00	-0.01	0.09	0.02	EB1	3.13	0.18	0.57	0.63	0.15	EB1	-0.00	-0.00	-0.02	-0.01	-0.00	EB1	3.61	0.17	0.54	0.71	0.17	EB2	3.68	0.01	0.42	0.61	-0.01	EB2	0.48	-0.00	-0.00	0.08	-0.00	EB2	3.20	0.02	0.42	0.53	-0.01	EB2	-0.00	-0.00	-0.00	-0.00	-0.00	EB2	3.69	0.01	0.42	0.61	-0.01	B1	5.87	-0.05	0.02	0.01	0.04	B1	1.60	-0.00	0.00	0.00	0.01	B1	3.61	-0.04	0.02	0.01	0.04	B1	5.91	-0.05	0.02	0.01	0.04	B2	11.19	-0.04	0.10	-0.02	-0.01	B2	3.11	0.00	0.00	-0.01	0.02	B2	6.42	-0.04	0.10	0.00	-0.00	B2	11.24	-0.04	0.10	-0.02	-0.01	B3	6.32	0.01	0.08	0.00	-0.06	B3	1.84	0.00	0.00	0.00	-0.01	B3	3.87	0.01	0.08	0.00	-0.05	B3	6.36	0.01	0.08	0.00	-0.05	B4	7.48	-0.01	0.01	-0.01	0.00	B4	2.35	-0.00	0.00	0.00	0.00	B4	3.81	-0.01	0.01	-0.01	-0.00	B4	1.31	0.00	0.00	0.00	-0.00	B4	7.51	-0.01	0.01	-0.01	-0.00	B5	12.83	-0.01	0.09	-0.02	-0.01	B5	4.90	0.00	0.01	0.00	-0.00	B5	4.01	-0.02	0.08	-0.04	-0.00	B5	3.91	0.00	0.01	0.01	-0.00	B5	12.84	-0.01	0.10	-0.02	-0.01	B6	8.53	-0.01	0.07	-0.02	-0.00	B6	2.96	0.00	0.00	-0.00	-0.00	B6	4.17	-0.01	0.07	-0.02	-0.00	B6	1.39	-0.00	0.00	0.00	0.00	B6	8.57	-0.01	0.07	-0.02	-0.00	B7	6.29	-0.02	0.01	-0.01	0.04	B7	1.85	-0.00	0.00	-0.00	0.00	B7	3.70	-0.02	0.01	-0.01	0.04	B7	0.74	0.00	-0.00	-0.00	-0.00	B7	6.34	-0.02	0.01	-0.01	0.04	B8	12.09	-0.00	0.10	-0.01	0.01	B8	3.58	0.00	0.00	-0.00	-0.00	B8	5.87	-0.00	0.09	-0.01	0.01	B8	2.64	0.00	0.00	0.00	-0.00	B8	12.11	-0.00	0.10	-0.01	0.01	B9	6.77	0.03	0.07	-0.02	-0.05	B9	2.09	0.00	0.00	-0.00	-0.00	B9	3.85	0.02	0.07	-0.02	-0.04	B9	0.82	-0.00	0.00	0.00	-0.00	B9	6.82	0.03	0.07	-0.02	-0.05	B10	6.93	-0.02	0.02	0.00	0.04	B10	2.11	-0.00	0.00	0.00	0.00	B10	3.88	-0.02	0.02	0.00	0.04	B10	0.93	0.00	0.00	0.00	-0.00	B10	6.96	-0.02	0.02	0.00	0.04	B11	12.00	0.00	0.08	-0.05	0.01	B11	3.67	0.00	0.00	-0.00	-0.00	B11	4.97	0.00	0.07	-0.05	0.01	B11	3.57	0.00	0.00	0.00	-0.00	B11	12.02	0.00	0.08	-0.05	0.01	B12	7.67	0.03	0.08	0.01	-0.04	B12	2.13	0.00	0.00	-0.00	-0.00	B12	4.59	0.03	0.08	0.00	-0.04	B12	7.71	0.03	0.08	0.01	-0.04	B13	4.97	-0.02	-0.00	-0.04	0.04	B13	1.52	-0.00	-0.00	-0.00	-0.00	B13	2.95	-0.02	-0.00	-0.04	0.04	B13	0.50	0.00	-0.00	0.00	-0.00	B13	5.01	-0.02	-0.00	-0.04	0.04	B14	9.95	0.00	-0.03	-0.03	0.01	B14	2.69	-0.00	0.00	0.00	0.00	B14	5.64	0.00	-0.03	-0.04	0.01	B14	1.62	-0.00	0.00	0.00	0.00	B14	9.99	0.00	-0.03	-0.03	0.01	B15	5.51	0.03	0.06	-0.05	-0.04	B15	1.58	0.00	-0.00	-0.00	-0.00	B15	3.41	0.03	0.06	-0.05	-0.04	B15	5.53	0.03	0.06	-0.05	-0.04	BM1	1.02	-0.01	0.09	-0.31	-0.02	BM1	0.41	-0.00	-0.00	-0.00	-0.00	BM1	0.62	-0.01	0.09	-0.31	-0.02	BM1	0.00	-0.00	-0.00	-0.00	-0.00	BM1	1.03	-0.01	0.09	-0.31	-0.02	BM2	-0.17	-0.01	-0.10	0.32	-0.02	BM2	0.41	-0.00	-0.00	-0.00	-0.00	BM2	-0.58	-0.01	-0.10	0.32	-0.02	BM2	0.00	-0.00	-0.00	-0.00	-0.00	BM2	-0.17	-0.01	-0.10	0.32	-0.02	BM3	-0.14	-0.00	-0.11	-0.14	0.00	BM3	0.41	-0.00	-0.00	-0.00	-0.00	BM3	-0.55	-0.00	-0.11	-0.14	0.00	BM3	0.00	-0.00	-0.00	-0.00	-0.00	BM3	-0.14	0.00	-0.11	-0.14	0.00	BM4	-0.40	-0.00	-0.10	0.33	0.00	BM4	0.41	-0.00	-0.00	-0.00	-0.00	BM4	-0.81	-0.00	-0.10	0.33	0.00	BM4	0.00	-0.00	-0.00	-0.00	-0.00	BM4	-0.40	-0.00	-0.10	0.33	0.00	BM5	-0.16	-0.00	-0.11	-0.15	0.00	BM5	0.41	-0.00	-0.00	-0.00	-0.00	BM5	-0.57	-0.00	-0.11	-0.15	0.00	BM5	0.00	-0.00	-0.00	-0.00	-0.00	BM5	-0.16	0.00	-0.11	-0.15	0.00	BM6	-0.42	-0.00	-0.11	0.34	0.00	BM6	0.41	-0.00	-0.00	-0.00	-0.00	BM6	-0.83	-0.00	-0.11	0.34	0.00	BM6	0.00	-0.00	-0.00	-0.00	-0.00	BM6	-0.42	0.00	-0.11	0.34	0.00	BM7	-0.16	-0.00	-0.11	-0.14	0.00	BM7	0.41	-0.00	-0.00	-0.00	-0.00	BM7	-0.57	-0.00	-0.11	-0.14	0.00	BM7	0.00	-0.00	-0.00	-0.00	-0.00	BM7	-0.16	0.00	-0.11	-0.14	0.00	BM8	-0.42	-0.00	-0.11	0.35	-0.00	BM8	0.41	-0.00	-0.00	-0.00	-0.00	BM8	-0.83	-0.00	-0.11	0.35	-0.00	BM8	0.00	-0.00	-0.00	-0.00	-0.00	BM8	-0.42	0.00	-0.11	0.34	0.00	BM9	-0.16	0.01	0.10	0.08	0.02	BM9	0.41	-0.00	-0.00	-0.00	-0.00	BM9	-0.57	0.01	0.10	0.08	0.02	BM9	0.00	-0.00	-0.00	-0.00	-0.00	BM9	-0.16	0.01	0.10	0.08	0.02	BM10	-0.42	0.01	-0.10	0.33	0.02	BM10	0.41	-0.00	-0.00	-0.00	-0.00	BM10	-0.83	0.01	-0.10	0.33	0.02	BM10	0.00	-0.00	-0.00	-0.00	-0.00	BM10	-0.42	0.01	-0.10	0.33	0.02

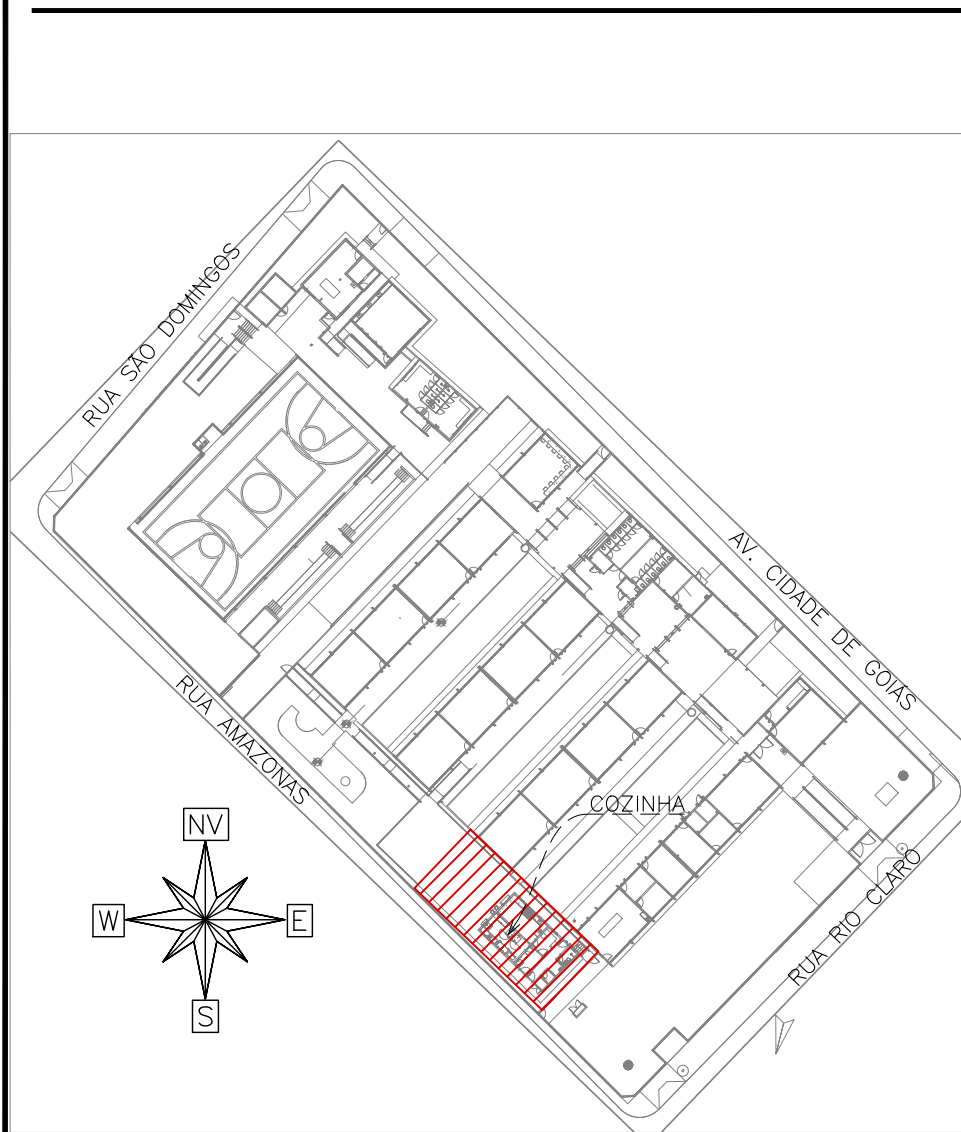
QUADRO DE CARGAS DA FUNDAÇÃO

SEM ESCALA

Observações:
 =====
 1 – Os valores apresentados referem-se às reações nos apoios
 2 – Esforços com valores característicos
 3 – Forças em tf
 4 – Momentos em tfm
 5 – Sistema de coordenadas GLOBAL
 6 – A força X positiva empurra o apoio da esquerda para a direita
 7 – O momento X positivo gira o apoio em torno do eixo X no sentido horário
 8 – A força Y positiva empurra em planta o apoio de baixo para cima
 9 – O momento Y positivo gira o apoio em torno do eixo Y no sentido horário
 10 – A força Z positiva empurra o apoio de cima para baixo
 11 – O momento Z positivo gira o apoio em torno do eixo Z no sentido horário
 12 – CA é o cota de arrasamento/assentamento da fundação



MAPA CHAVE



COZINHA

ESCALA 1:1000

CARREGAMENTO UTILIZADO

PESO ESPECÍFICO DO CONCRETO: 2,5 t/m³
 SOBRECARGA NORMATIVA NBR120:2019 – TABELA 10
 CARGAS PRÓPRIAS DO PROJETO DE ESTRUTURA METÁLICA

PROJETOS DE REFERÊNCIA

PRJ-123776-EK-ARQ-0101-REV00
 PRJ-123776-EK-EMT-0000-REV00

NOTAS

1. MEDIDAS E DIMENSÕES EM CENTÍMETROS, NÍVEIS EM METROS, EXCETO ONDE ESPECIFICADO O CONTRÁRIO;
2. CONCRETO ESTRUTURAL Fck 25MPa COM FATOR ÁGUA-CEMENTO (A/C) 0,60 E MÓDULO DE ELASTICIDADE (EC2)-28.000 MP